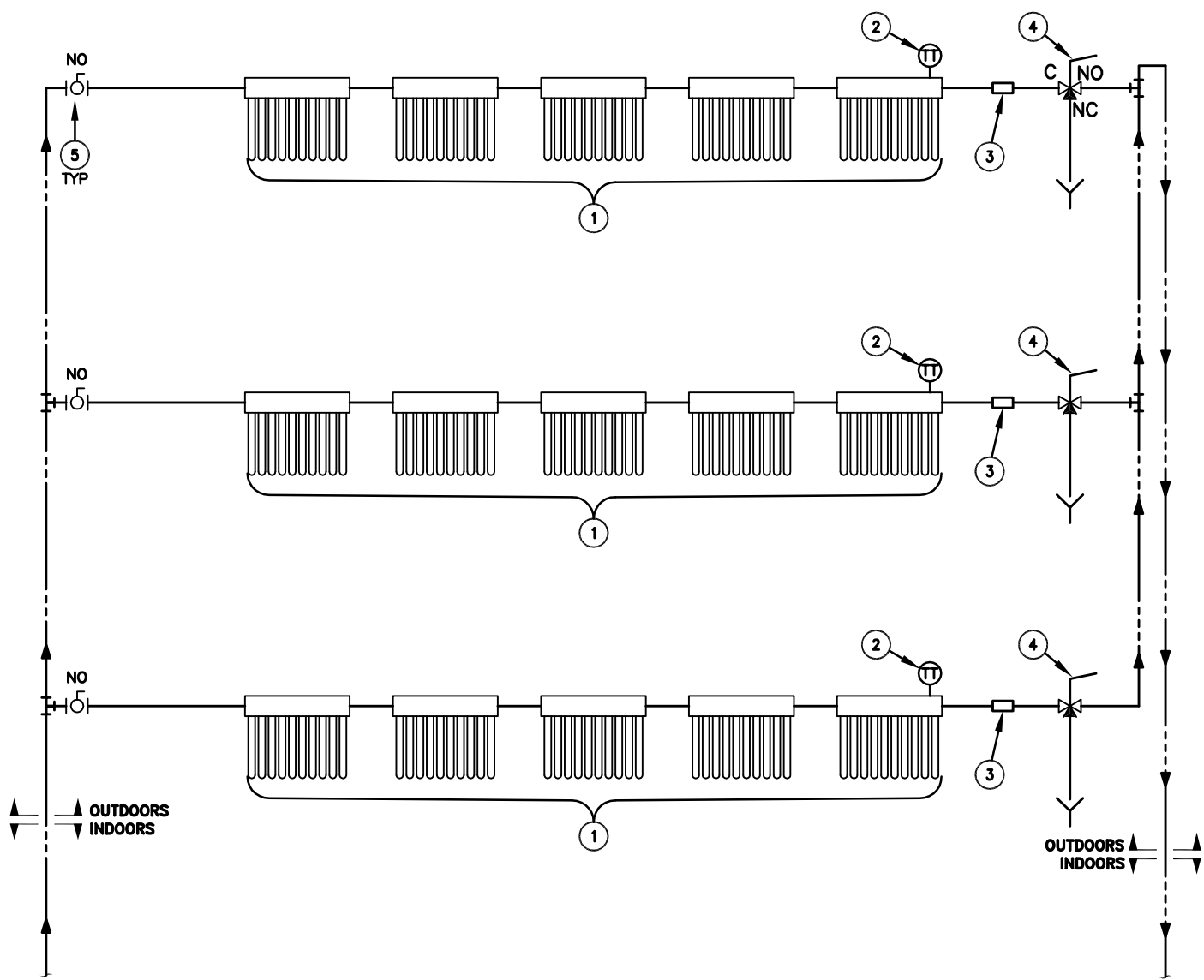


03/12/13-17:26 PATH: DHW-10v5

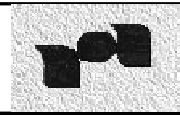


GENERAL NOTE :

1. ADD ISOLATION VALVES AND UNIONS AS NEEDED.

KEYED NOTES :

- ① KINGSKAN, HP-450 SOLAR COLLECTOR, INSTALL UP TO 5 COLLECTORS IN SERIES.
- ② INSTALL RTD INTO THERMOWELL ON LAST COLLECTOR OUTLET ON EVERY ROW OF COLLECTORS AS SHOWN TO SENSE TEMPERATURE IN COLLECTOR HEADER (BY CONTROLS CONTRACTOR).
- ③ THERM-OMEGA TECH, # HATLP-RA-LP-165, 3/4", THERMAL BALANCING VALVE (REVERSE ACTING). SET POINT 165 DEG.F.
- ④ INSTALL MANUAL THREE-WAY BALL VALVE CONNECTED AS SHOWN FOR OUTLET ISOLATION AND PRESSURE BLEED OF A COLLECTOR ROW.
- ⑤ INSTALL MANUAL SHUT OFF BALL VALVE CONNECTED AS SHOWN FOR INLET ISOLATION OF A COLLECTOR ROW.



RAND ASSOCIATES INCORPORATED

Large Solar Array Flow Diagram
DOMESTIC HOT WATER

PIPING
DIAGRAM

Size: B	FSGM No: -	Drawing No: DHW-10	Version: 5
Drawn By: BLW	Scale: NONE	Date: 03.12.2013	Sheet: 1 of 1